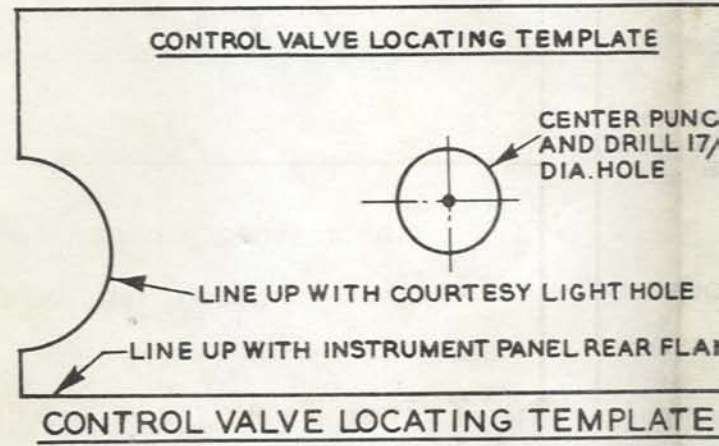
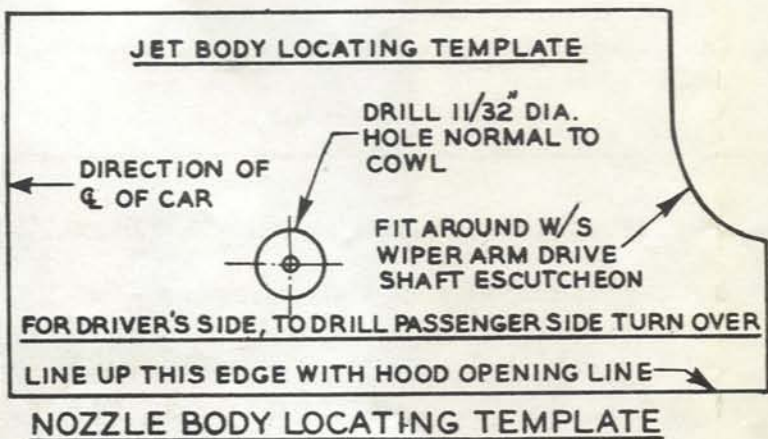
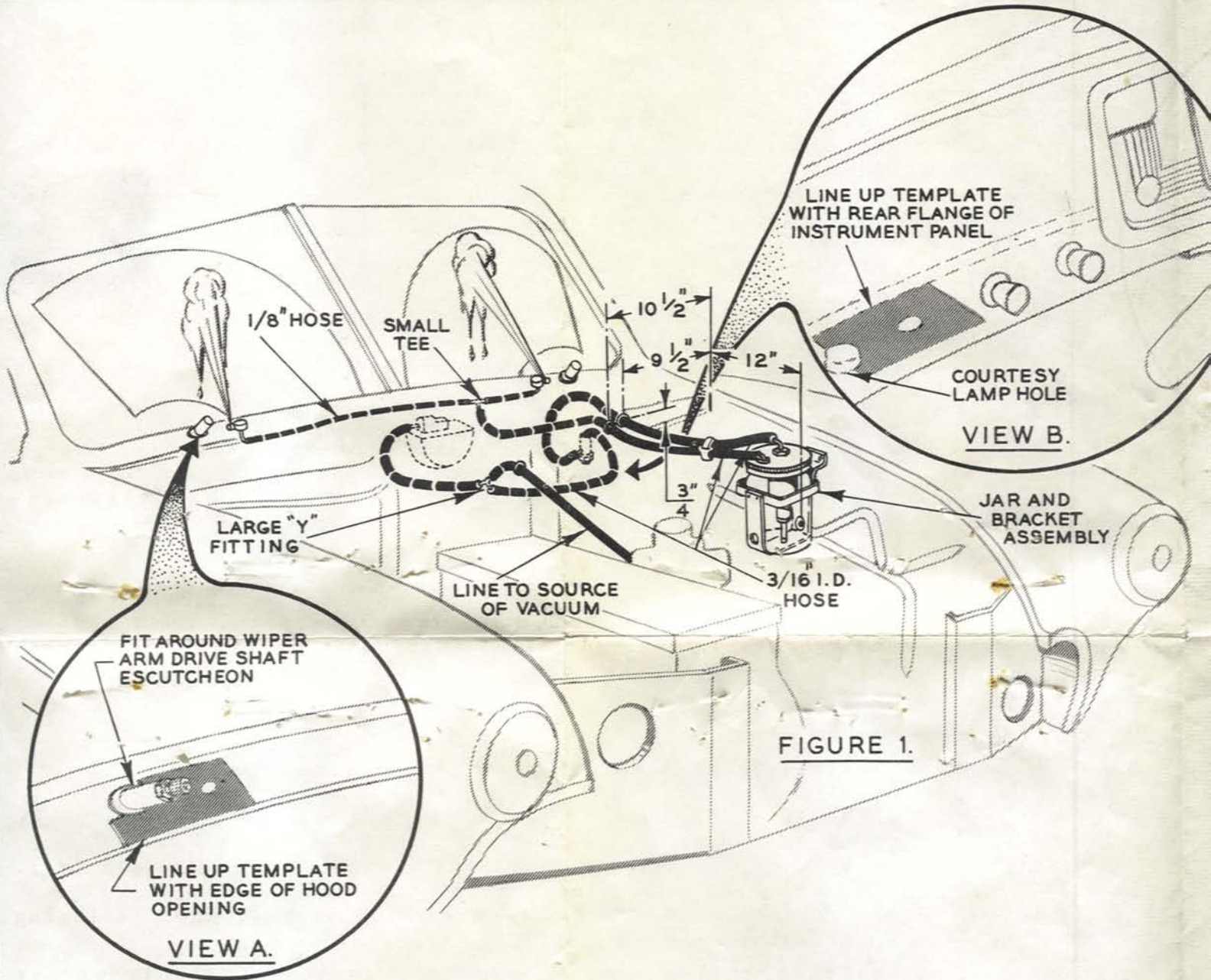


Instructions for Installing Automatic Windshield



Washer on 1951 and 1952 Henry J Kaiser

1

JAR MOUNTING

Attach auxiliary bracket to washer jar bracket with screws, nuts and lockwasher provided. Using bracket as template, locate and drill 3 holes with 5/32" (No.21) drill using location shown in (Figure 1) on left fender splash pan. Attach with self tapping screws provided.

2

NOZZLE MOUNTING

Using nozzle body template locate and drill two 11/32" diameter holes in cowl (View A). See instructions on template. Install nozzle body and gasket assembly securing with wing nut under cowl.

SUGGESTION: After completing hose connections, remove nozzles and flush out lines by operating washer several times. Replace nozzles and adjust pin-hole openings to direct stream of water on glass near the top of wiper blade arc.

3

CONTROL

Using control valve template, locate and drill 17/32" diameter hole in lower flange of instrument panel. Install control valve in flange as shown in (View B).

4

HOSE CONNECTION

Install 3/16" and 1/8" hose as shown in (Figure 1).

GENERAL SUGGESTIONS

1. Make sure hose is routed to clear any moving wiper part.
2. Fill jar with clean water.
3. Use Trico All Season Solvent the year around, following instructions on bottle regarding its usage.

CAUTION: Do not use cleaning solutions, anti freeze or chemicals which may damage car finish or washer parts.

4. Nozzles are self cleaning by removing cap or screw in end of nozzle and flushing.

PATENTS: 1786932, 1949098, 2142056, 2153519, 2206814, 2206815, 2260904, 2289650, 2538905,

CANADA: 1930, 38, 39, 40 BRITISH: 467950, 477820, 491414, 650065.

Trico Products Corporation Buffalo 3, N. Y.