

HEATER INSTALLATION INSTRUCTIONS

PART NO. 100171

FOR HENRY J MODELS 513 AND 514

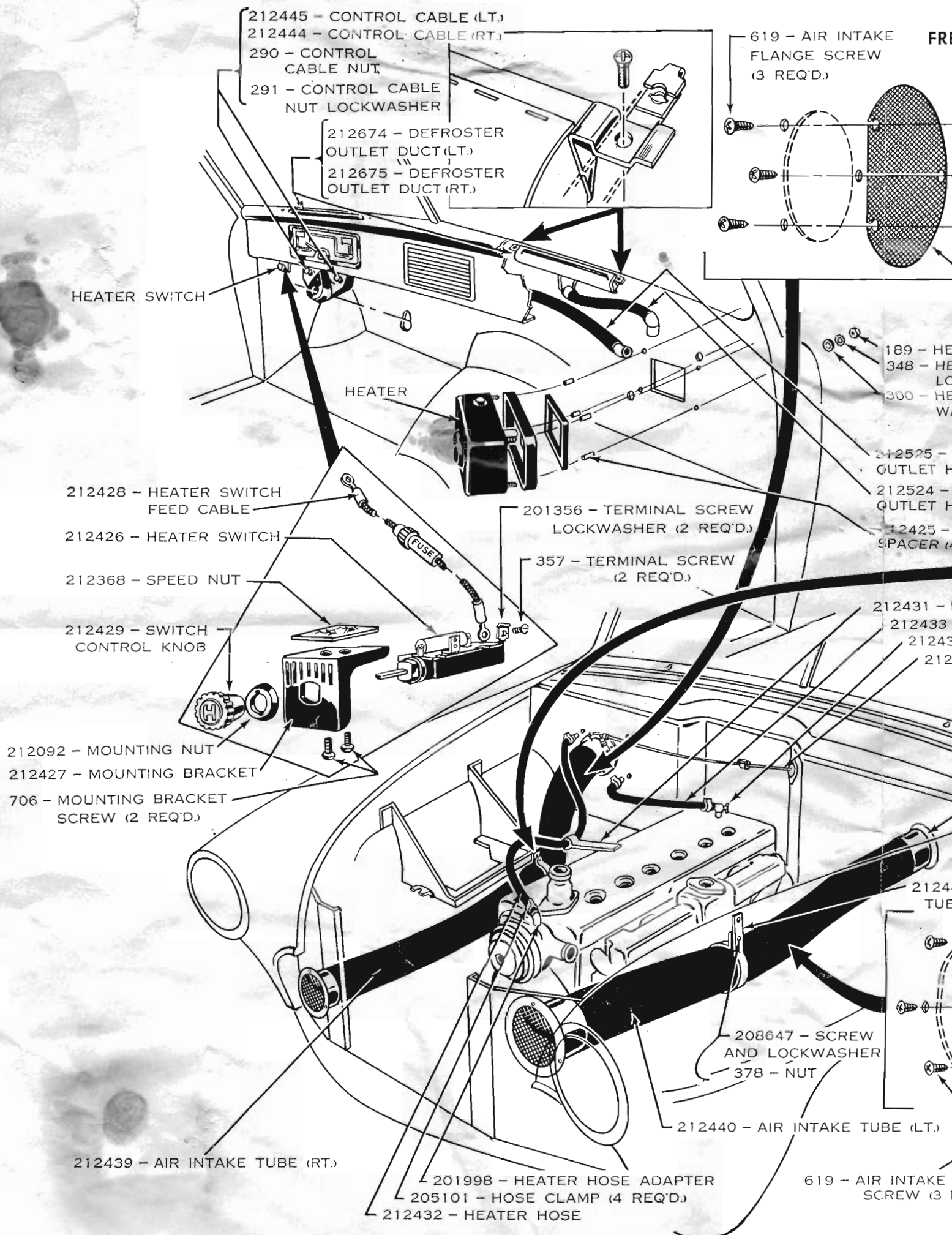
1. Drain radiator, using a clean receptacle as liquid may contain anti-freeze and if so must be replaced when installation is completed.
2. Remove rectangular section of fire wall trim panel and insulation on scored lines. Punch out knock-out plugs in fire wall for heater water connections. Drill four 3/8" diameter holes through indentations in firewall.
3. Heater may be installed as "Air Conditioning" or "Recirculating" type heater.

FOR AIR CONDITIONING HEATER: Punch out 4-1/4" diameter knock-out plug in fire wall. Install Air Duct Package (Part No. 100172). Complete installation instructions are contained in the package.

FOR RECIRCULATING HEATER: Remove back cover and rubber insulator from heater housing.

4. Remove the four screws located in instrument panel just below the garnish moulding. Using these same screws and speednuts, install the defroster outlet ducts.
5. Place the four (4) Heater mounting spacers over the studs on back of heater. Install heater in position letting studs and water connections protrude through the fire wall. Secure heater in position with four (4) flatwashers, lockwashers and nuts.
6. Install heater switch bracket in slot located at left of steering column in lower flange of instrument panel.

7. Disconnect one of the battery cables. Attach heater switch feed cable to one terminal of heater switch. Attach other end of cable to coil terminal (right hand side) of ignition switch.
8. Connect wire from heater motor to remaining terminal on heater switch. Install heater switch, nut and knob on heater switch bracket. Reconnect battery cable. With ignition switch in on position, turn on heater switch be sure that switch and motor operate properly.
9. Install rubber elbows, which are stapled in ends of defroster openings in heater housing.
10. Connect long hose to left defroster outlet duct and short hose to right defroster outlet duct.
11. Remove pipe plugs from rear of cylinder head and water pump water inlet connection. Coat threads on shut-off valve (or valve and extension) and hose adapter with KF Gasket Paste. Screw shut-off into cylinder head and heater hose adapter into water pump water inlet connection.
12. Connect with hose the lower water connection on heater and shut-off valve in cylinder head. Elbow end of hose going on heater connection.
13. Mount heater hose support under the cylinder head stud which holds the spark plug wire support bracket. Connect the remaining piece of hose to the upper water connection on heater housing. Run hose through support bracket and connect to hose adapter on water pump inlet connection. Secure all four (4) hose connections with hose clamps.
14. Open heater shut-off valve and close radiator draincock. Refill the cooling system.
15. Check all connections for leaks. Start engine and again check for leaks.
16. After water is warm, feel hoses to be sure the system has automatically bled itself of air and is filled with water. If system is air bound, as indicated by cold hoses, loosen hose connection at top of heater and back off carefully. Hold hose almost disconnected until air is bled. Replace quickly when water starts to flow from hose.



- 212445 - CONTROL CABLE (LT.)
- 212444 - CONTROL CABLE (RT.)
- 290 - CONTROL CABLE NUT
- 291 - CONTROL CABLE NUT LOCKWASHER

- 212674 - DEFROSTER OUTLET DUCT (LT.)
- 212675 - DEFROSTER OUTLET DUCT (RT.)

- 619 - AIR INTAKE FLANGE SCREW (3 REQ'D.)

HEATER SWITCH

HEATER

- 212428 - HEATER SWITCH FEED CABLE
- 212426 - HEATER SWITCH

- 212368 - SPEED NUT

- 212429 - SWITCH CONTROL KNOB

- 212092 - MOUNTING NUT
- 212427 - MOUNTING BRACKET
- 706 - MOUNTING BRACKET SCREW (2 REQ'D.)

- 201356 - TERMINAL SCREW LOCKWASHER (2 REQ'D.)

- 357 - TERMINAL SCREW (2 REQ'D.)

- 189 - HEATER HOSE
- 348 - HEATER HOSE
- 300 - HEATER HOSE
- WA - HEATER HOSE

- 212525 - HEATER HOSE OUTLET HOSE
- 212524 - HEATER HOSE OUTLET HOSE
- 212425 - HEATER HOSE SPACER (4 REQ'D.)

- 212431 - HEATER HOSE
- 212433 - HEATER HOSE
- 21243 - HEATER HOSE
- 212 - HEATER HOSE

- 208647 - SCREW AND LOCKWASHER
- 378 - NUT

212439 - AIR INTAKE TUBE (RT.)

212440 - AIR INTAKE TUBE (LT.)

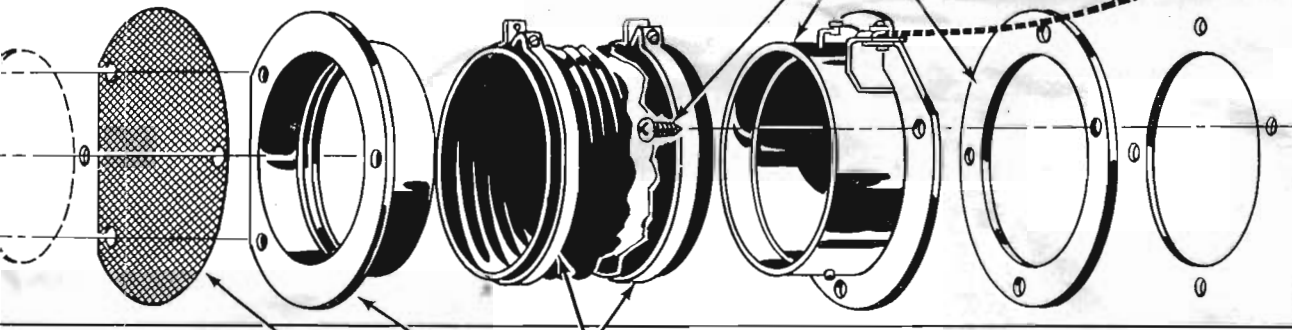
- 201998 - HEATER HOSE ADAPTER
- 205101 - HOSE CLAMP (4 REQ'D.)
- 212432 - HEATER HOSE

619 - AIR INTAKE SCREW (3 REQ'D.)

AIR INTAKE
E SCREW
'D.)

FRESH AIR DUCT PACKAGE (RIGHT SIDE) PART NO. 100172

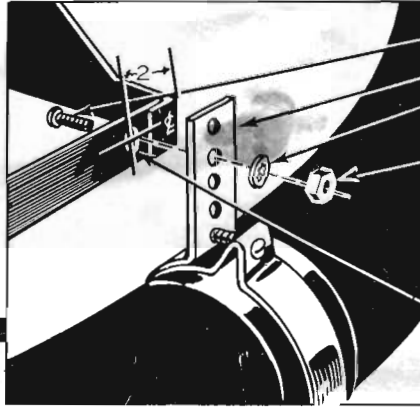
- 648 - MOUNTING SCREW (4 REQ'D)
- 212434 - DAMPER ASSEMBLY (RT.)
- 212436 - MOUNTING GASKET



- 212443 - INTAKE TUBE CLAMP (2 REQ'D)
- 212437 - AIR INTAKE FLANGE
- 212438 - AIR INTAKE SCREEN

- 189 - HEATER MOUNTING NUT (4 REQ'D)
- 348 - HEATER MOUNTING NUT LOCKWASHER (4 REQ'D)
- 300 - HEATER MOUNTING NUT WASHER (4 REQ'D)

- 212525 - DEFROSTER OUTLET HOSE (LT.)
- 212524 - DEFROSTER OUTLET HOSE (RT.)
- 212425 - HEATER MOUNTING SPACER (4 REQ'D)



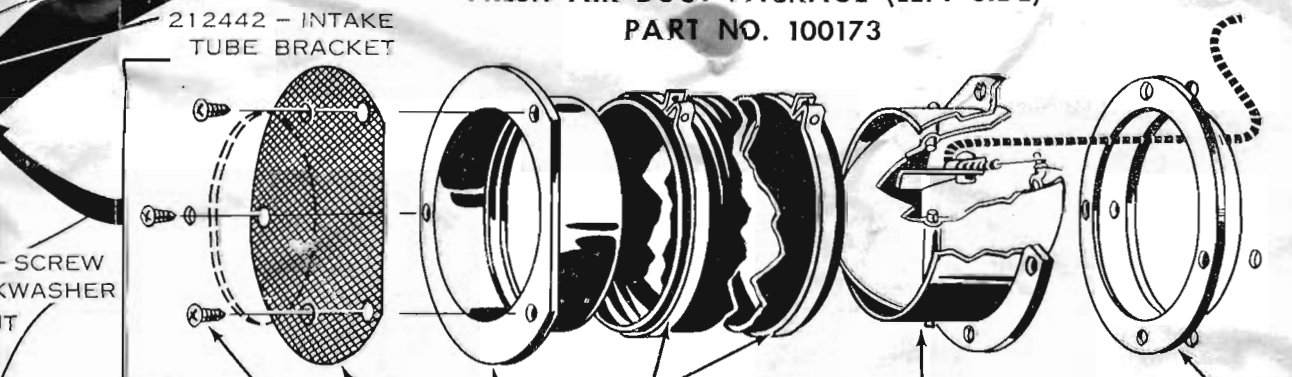
- 946 - INTAKE TUBE BRACKET SCREW
- 212441 - AIR INTAKE TUBE BRACKET (RT.)
- 259 - INTAKE TUBE BRACKET SCREW NUT LOCKWASHER
- 378 - INTAKE TUBE BRACKET SCREW NUT

NOTE: DRILL 7/32" HOLE IN BATTERY SUPPORT

- 212431 - HEATER HOSE BRACKET
- 212433 - HEATER TO ENGINE HOSE
- 212430 - HEATER SHUT-OFF VALVE
- 212444 - CONTROL CABLE

- 212435 - DAMPER ASSEMBLY (LT.)
- 212436 - MOUNTING GASKET
- 648 - MOUNTING SCREW (4 REQ'D)

FRESH AIR DUCT PACKAGE (LEFT SIDE) PART NO. 100173



- 212442 - INTAKE TUBE BRACKET

- SCREW
KWASHER
IT

INTAKE TUBE (LT.)

- 619 - AIR INTAKE FLANGE SCREW (3 REQ'D)

- 212443 - INTAKE TUBE CLAMP (2 REQ'D)

- 212437 - AIR INTAKE FLANGE
- 212438 - AIR INTAKE SCREEN

- 212436 - MOUNTING GASKET
- 212435 - DAMPER ASSEMBLY (LT.)