

There is strong evidence that the company who manufactured this kit for Wards was the same company that made the Kaiser-Frazer Authorize Direction Signal Kit for the Henry J (P/N 100216)

This Installation Instruction is a good supplement to the one supplied by Kaiser-Frazer.

The box that this kit came in had the following on it's label:

DIRECTIONAL SIGNAL CONVERSION KIT No. 61-6998

WILL CONVERT 2 PARKING LIGHTS AND 2 TAIL LIGHTS OR 2 STOP LIGHTS INCLUDES SELF CANCELLING SWITCH

DODGE-- 1949 thru 1962 Wayfarer
(with 2-Stop Lites)

DODGE-- 1949 thru 1954

(All others except 1951-52 Coronet)

HENRY J-- 1951 - 53

HUDSON-- 1948 - 49

(with Standard Steering Wheel)

HUDSON-- 1950 - 53--All Models

PLYMOUTH-- 1949 with 2-Stop Lites

PLYMOUTH-- 1950 thru 1954

INSTALLATION INSTRUCTIONS FOR 4-LITE TURN SIGNAL KIT

(WITH SELF CANCELLING SWITCH)
#9000 - ST

No. 621 or T-21

DODGE—1949 - Wayfarer with 2-Stop Lites.
DODGE—1949-54 - All others (exp't Coronet '51-52)
HUDSON—1948-53 with Stand. Steering Wheel.
HUDSON—1950-53 with Deluxe Steering Wheel.

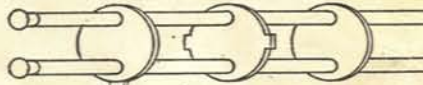
HENRY J—1951 - '53.
PLYMOUTH—1949 - with 2-Stop Lites.
PLYMOUTH—1950 - '54 — All Models.

FRONT PARKING LITES:

To convert left and right Parking Lites so they function as combination Parking and Directional Signal Lites, proceed as follows:

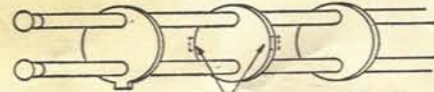
LEFT HAND LITE:

1. Remove the left hand parking lite door. Disconnect the wires from both parking lites at junction block located on left front fender inside of hood in front of radiator core. Cut wire close to socket, remove bulb and bulb contact terminal wafer. Leave original spring in socket. Pull wire out of parking lite housing and discard. Insert new socket wire assembly (with yellow and red wires, thru spring, socket and hole in housing running both wires back along course of original wire just removed.



REMOVE EAR FROM THIS WASHER WHEN USED ON DODGE & PLYMOUTH CARS & 1951 HUDSON EXCEPT FACEMAKER.

USE THIS FOR DODGE & PLYMOUTH & HUDSON-1951



USE THIS FOR HENRY J & HUDSON-1950 & HUDSON-1951 FACEMAKER.

REMOVE EARS FROM THIS WASHER WHEN USED ON HENRY J CARS & HUDSON-1950

Place washers in sockets so that terminals on ends of wires match terminals on bulbs.

2. Connect yellow wire from new socket assembly to junction block on left front fender from which original wire was removed. (Using terminal furnished). Connect red wire from new socket assembly to red wire in signal switch harness as shown on Wiring Diagram.

RIGHT HAND LITE:

3. Repeat operation No. 1 for left hand parking lite. (Use new socket with yellow and green wires).
4. Repeat operation No. 2 for left hand parking lite, connecting green wire to green wire in signal switch harness as shown on wiring diagram. (Use terminal furnished).

PLACE DOUBLE FILAMENT BULBS IN SOCKETS SO THAT LOW CANDLE POWER FILAMENTS ARE BURNING WHEN PARKING LITE SWITCH IS TURNED ON.

Replace both left hand and right hand parking lite doors. For replacement bulbs use Mazda No. 1158.

REAR SIGNAL LITES:

To convert rear stop lites into combination stop and turn signal lites proceed as follows:

Disconnect left rear stop lite wire from car harness. Tape end of wire on harness, attach wire from left rear lite to brown wire. Run brown wire under floor mat and attach to brown wire of switch harness. — See Wiring Diagram.

Remove wire leading to stop lites from stop lite switch. (Do not remove hot wire). Attach this wire to end of blue wire and tape. Fasten other end of blue wire to blue wire of switch harness. Attach yellow wire to stop lite switch where wire leading to rear was just removed. Fasten other end of yellow wire to yellow wire of switch harness. (See wiring diagram).

MOUNTING TURN SIGNAL SWITCH

Assemble strap as shown in Fig. 1 by inserting one side of hook into slot of slotted band. Then move hook band so that other hook slides into slot and locks.

Attach switch mounting bracket to steering column with adjustable strap clamp, as shown in Fig. 2 or 3. Attach slotted end of bracket to signal switch with screws furnished.

Adjust bracket on steering column so that rubber roller of signal switch is under slight compression against revolving hub of wheel.

Remove paint from steering column under bracket to insure good ground connection for pilot lite. Tighten clamp screws securely.

To replace pilot lite bulb remove cover of switch by loosening screw on side of switch cover. Replace with #51 Mazda Bulb. Connect wire with fuse in line to "OFF" terminal of ignition switch.

Fasten flasher and socket to any convenient place behind instrument panel.

INSERT HOOK STRAP INTO SLOTTED STRAP AS SHOWN FOR

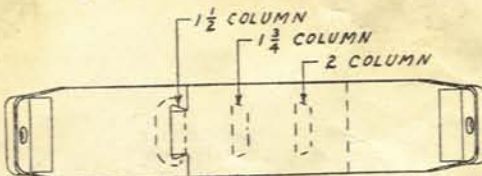


Fig. 1

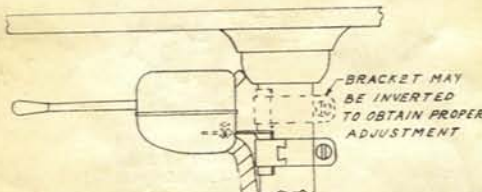


Fig. 2

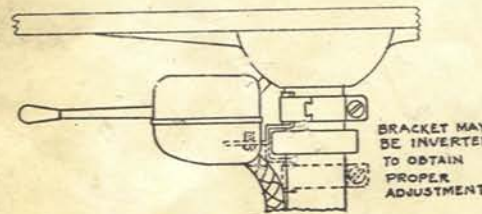


Fig. 3—HUDSON

BRACKET MAY BE INVERTED TO OBTAIN PROPER ADJUSTMENT

BRACKET MAY BE INVERTED TO OBTAIN PROPER ADJUSTMENT

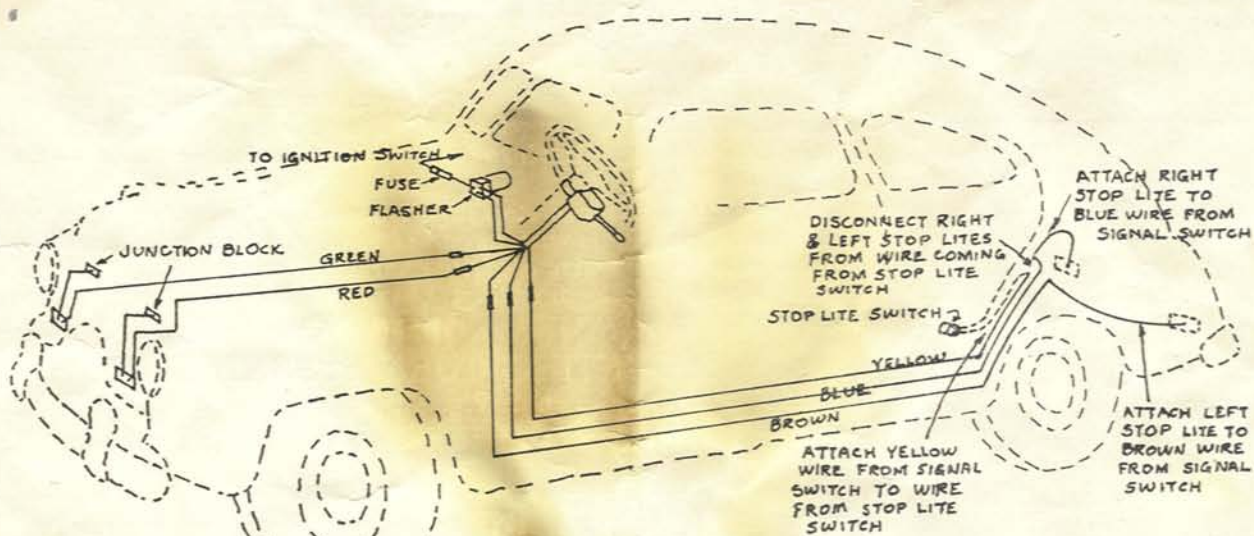
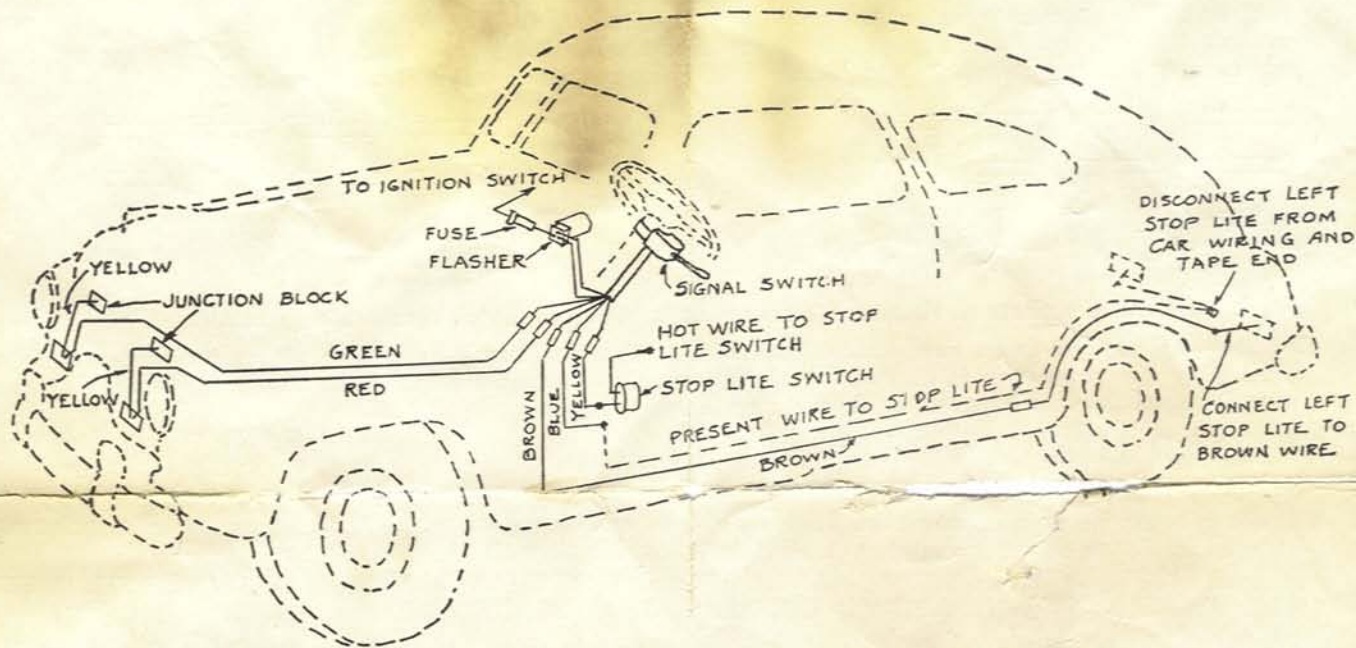
IMPORTANT -- Flasher Instructions

All Flashers used in connection with Signal Lites are made to function in a specific manner. When front and rear Signal Lites are used, Tungsol P-229D Flasher should be used. **BE SURE PROPER FLASHER IS USED.**

Instructions Regarding Tell-Tale Lite in Signal Switch

When switch is used with front and rear Signal Lites and P-229D Flasher, the Tell-Tale Lite will flash on and off 60 times per minute. If Tell-Tale Lite does not lite when handle is moved to right or left, it indicates that one of the Bulbs in either front or rear Signal Lite is burned out. (Replace Bulb).

WIRING INSTRUCTIONS



WIRING DIAGRAM FOR
DODGE—1950 - 1954
PLYMOUTH—1950 - 1954