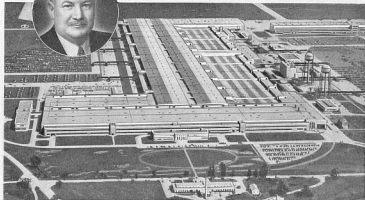




JOSEPH W. FRAZER, Chairman and President of Graham-Paige Motors Corporation, producers of ROTOTILLERS, FRAZER automobiles, tractors, and farm implements.



GRAHAM-PAIGE AT WILLOW RUN!

**New FRAZER MOTOR CARS, TRACTORS, ROTOTILLERS[®]
and Farm Equipment to be Produced at World-Famous War Plant!**



ROTOTILLER—the second best in field and garden. Makes deep, productive seedbeds for better crops and yields. Recommended for mowing, cleaning and discing of farms, gardens, and street lots.

WILLOW RUN, world-famous war plant, will soon be serving the pressing needs of two most vital industries, civilian transportation and agriculture. Within a few weeks, production will have commenced here on Graham-Paige's great new FRAZER motor car, while production is already under way on parts of its new line of FRAZER farm equipment.

Heading the farm equipment line is the powerful new FRAZER tractor. Modern, sleek, sturdy, it offers a combination of advantages never before available at mass-production prices. It is a highly adaptable universal-type tractor, of full two-plow capacity, with direct-attached implements for a wide variety of farm requirements.

Graham-Paige is already going ahead on its versatile new walking model ROTOTILLER, a power tillage machine of amazing utility. Thousands of users proclaim it an indispensable work-saver. The larger tractor-operated models, now being developed, will be announced in this publication at a later date.

Several other highly improved farm machines and implements are now being engineered and field-tested at Willow Run, under the personal attention of Joseph W. Frazer. All will be sold by Graham-Paige under the banner of FRAZER farm equipment. It will be of profit to everyone interested in the future of power farming to "keep watching the news from Graham-Paige!"

REMARK: Some territories still open for the FRAZER Tractor, Rototiller and Farm Equipment, under a single franchise. State qualifications, and locality desired.

GRAHAM-PAIGE MOTORS CORPORATION, WILLOW RUN, MICHIGAN
Farm Equipment Division, Dept. 111

FRAZER FARM EQUIPMENT

Keep watching the news from GRAHAM-PAIGE!



THE NEW FRAZER TRACTOR—available at Graham-Paige's new line of Farm Equipment. It has many powerful options, a wide range of speeds, and various essential work-link treatments.